



£120,000

Damsen Mulbury , Windermere LA23 1LF

Park Home | 2 Bedrooms | 2 Bathrooms



# Step Inside

---

## Key Features

- Park is On Lake Windermere
- Excellent Sub Let Revenue
- Double Glazed and Central Heated
- Large Wrap Decking
- Patio Furniture Included
- Pet Friendly Park
- 11 Month Park
- 34 Years on Licence

## Property Description

2007 ~Damsen Mulberry Lodge, 2 Beds, 14ft x 20 ft

## Main Particulars

### Holiday Home Description

Lovely 2 bedroom open plan lodge, free standing furniture, dining area, maintained to a very high standard plenty of storage space throughout, excellent sub let opportunity current owners have yielded up to £25,000 per year and have documentation to confirm

Two bedrooms: 1 x double with en-suite shower, basin and WC, 1 x twin

Bathroom with bath, handheld shower, basin and WC Kitchen, Lounge/diner, Gas central heating, Electric oven and gas hob, microwave, fridge/freezer, washing machine, TV, WiFi

Built in Oven and Hob, free standing fridge freezer, washing machine in boiler cupboard

### Park Description

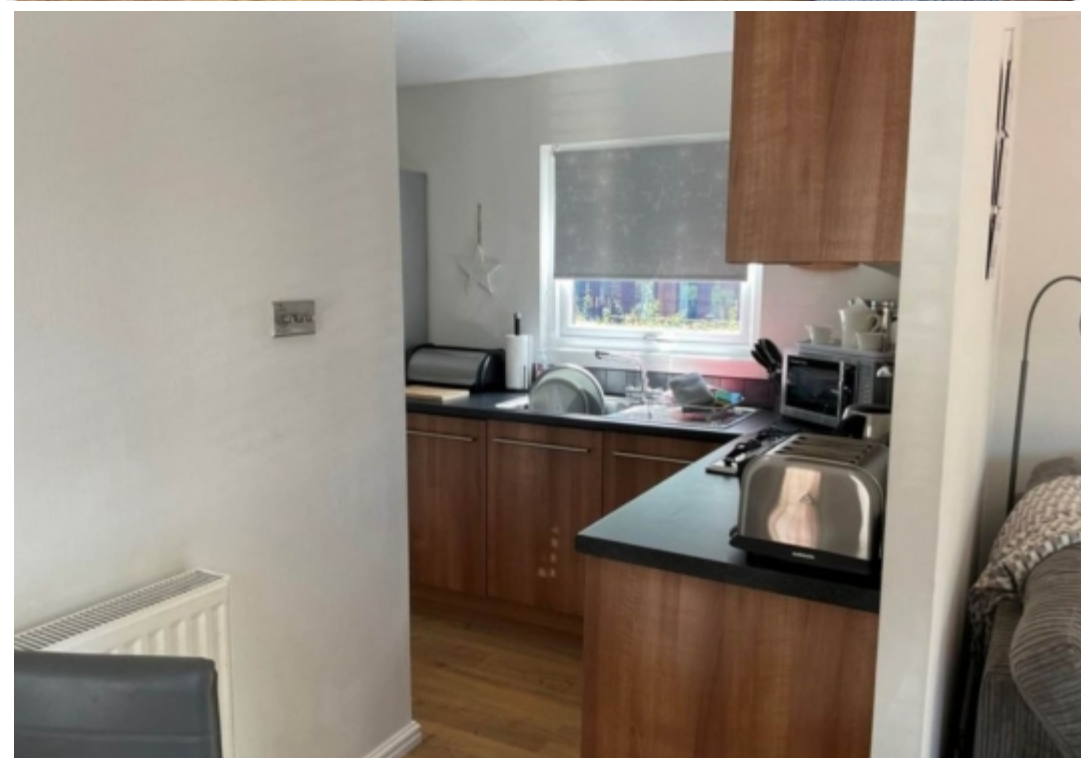
Whether you prefer to be active or sit back and relax, you'll find your own perfect escape at Bowness-on-Windermere.

The Park location right on the shores of the lake provides the perfect destination for a family holiday or couple's getaway. Set within pretty woodland, you'll enjoy a lovely natural environment with plenty of opportunities for wildlife spotting.

On park you'll find everything you need for total relaxation with an indoor pool, spa pool, sauna and steam room.

Youngsters are also well catered for with a children's play area and activities during the school holidays.







[www.bowlandproperties.co.uk](http://www.bowlandproperties.co.uk)